



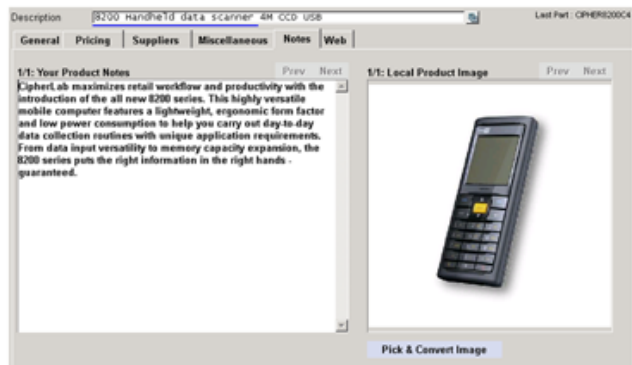
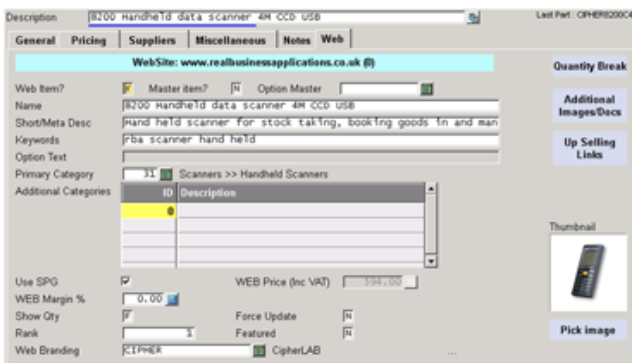
# Website Integration

## In a nutshell

Running a bricks and mortar business is challenging enough at times without having to worry about maintaining an online shop. Wouldn't it be nice if what you sold in your shop instantly effected your stock levels online? And visa versa wouldn't it be handy if your online orders fed into your EPOS system? This is what our Website Integration module does, it makes running an ecommerce site alongside your existing business as easy and as efficient as possible.

## How does it do this?

The Web Module can automatically upload product information to your web shop. All your website's categories and products can therefore be managed centrally within Retailer. The Web Module also knows when a change has been made to an existing product and update it on the web accordingly. Most importantly all stock movements are synchronized. The Web Module will also check to see if any orders have been places online, if any are found they will be downloaded straight into your RBA EPOS system for processing and dispatching.



## 8200 Handheld data scanner 4M CCD USB



£495.00 excl VAT

£594.00 inc VAT

SKU: CIPHERS200C4

Stock: In stock

Quantity: 1

Add to cart

### Product Description

CipherLab maximizes retail workflow and productivity with the introduction of the all new 8200 series. This highly versatile mobile computer features a lightweight, ergonomic form factor and low power consumption to help you carry out day-to-day data collection routines with unique application requirements. From data input versatility to memory capacity expansion, the 8200 series puts the right information in the right hands - guaranteed.

### Associated documents

spec sheet





<ul style="list-style-type: none"> <li>• Image re-scaling</li> <li>• Bespoke carriage rules (eg postcode specific pricing)</li> </ul>	✓	✓
---	---	---

\*all artwork and content to be supplied by client † limited to 5 pages

## API?

API stands for Application Programming Interface. In the case of the Retailer Web Integration API this allows for your Retailer software to send information to your website.

## What information can be sent by the API?

	Standard	Optional
<b>Stock Features</b> <ul style="list-style-type: none"> <li>• Multiple images</li> <li>• Associated documents (eg .pdf's for product info)</li> <li>• Branding</li> <li>• Categories</li> <li>• Extended product notes</li> <li>• Products descriptions</li> <li>• Meta data</li> <li>• Master products with options</li> <li>• Associated products (up-selling)</li> <li>• Stock levels</li> </ul>	✓ ✓ ✓ ✓ ✓ ✓ ✓ ✓ ✓ ✓	
<b>Order features</b> <ul style="list-style-type: none"> <li>• Customer creation</li> <li>• Delivery points</li> <li>• Carriage</li> <li>• Overseas</li> <li>• Paid online or account sales</li> </ul>	✓ ✓ ✓ ✓ ✓	

## Advanced Retailer Features

	Standard	Optional
<ul style="list-style-type: none"> <li>• Drop shipping</li> <li>• Email and SMS</li> <li>• DPD integration</li> <li>• Stock allocation</li> <li>• Create delivery notes &amp; picking lists for web orders</li> <li>• Differentiate web orders on delivery management</li> </ul>	<p>✓</p> <p>✓</p> <p>✓</p> <p>✓</p> <p>✓</p> <p>✓</p>	<p>✓</p>

## Can you host my website too?

Yes through our web developer partner Symposium Digital we offer a competitive and robust hosting package to keep your website live.

	Standard	Optional
<p><b>Hosting</b></p> <ul style="list-style-type: none"> <li>• UK Data Centre</li> <li>• Monitored 24/7</li> <li>• Daily Backups</li> <li>• SSL Certification</li> </ul>	<p>✓</p> <p>✓</p> <p>✓</p>	<p>✓</p>

*Please note: The above features are a guide as to what is typically available with a website integration package, any bespoke work requested will be subject to review and will likely incur an additional development fee.*